

LEASEHOLD



Apartment

FLAT 23, PROBYN HOUSE PAGE STREET, LONDON, SW1P 4BG

Asking Price

£375,000

FEATURES



TUCKERMAN
ESTATE AGENTS
PROPERTY PROFESSIONALS

0 Bedroom Apartment located in London

A very well presented studio apartment located on the raised ground floor of this elegant Victorian mansion block.

Call us on

020 7222 5510

info@tuckermanresidential.co.uk

www.tuckermanresidential.co.uk

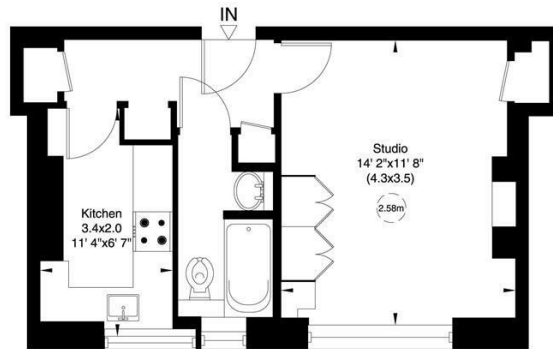
Council Tax Band

Probyn House, Page Street, SW1

Approximate Gross Internal Area

31 sq m/ 337 sq ft

Not to Scale, for identification only



Raised Ground Floor

For guidance only and must not be relied upon as a statement of fact.
All measurements and areas are approximate only (and have been prepared in accordance with the current edition of the RICS Code of Measuring Practice).



Energy Efficiency Rating		Current	Potential
<i>Very energy efficient - lower running costs</i>			
(92 plus) A			
(81-91) B			
(69-80) C			
(55-68) D			
(39-54) E			
(21-38) F			
(1-20) G			
<i>Not energy efficient - higher running costs</i>			
England & Wales		EU Directive 2002/91/EC	

Agents Note: Whilst every care has been taken to prepare these particulars, they are for guidance purposes only. All measurements are approximate and are for general guidance purposes only and whilst every care has been taken to ensure their accuracy, they should not be relied upon and potential buyers are advised to recheck the measurements.